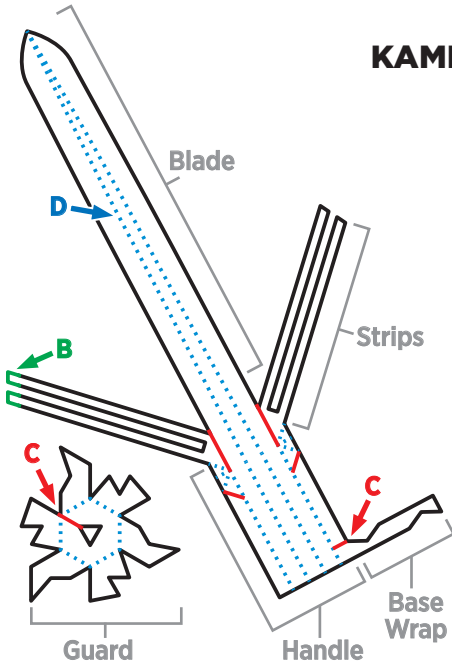


KAMIGAWA: NEON DYNASTY PAPERCRAFT

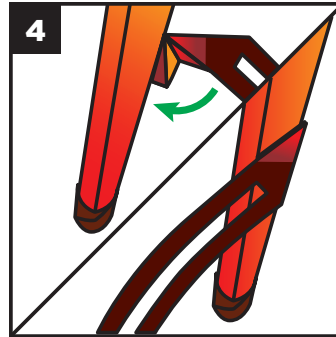
KATANA INSTRUCTIONS



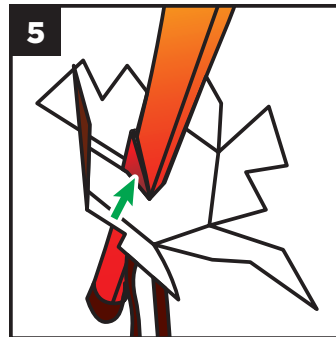
A: Print one of the pages with the flat artwork on letter-sized paper. Select “Do Not Scale” or “Actual Size” so the model will be as large as possible.

B: Some parts in the margin (shown in green) may not print—that’s ok, just continue to cut the strips or other parts out to the edge of the paper.

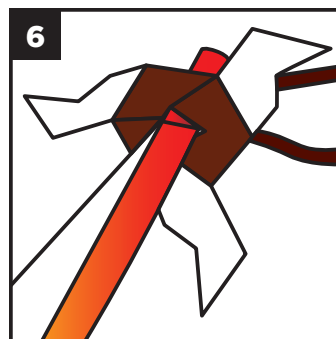
C: Cut out all the artwork, including all solid lines (shown in red).



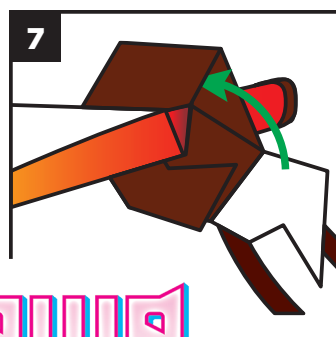
4: Accordion-fold the **Strips** and press flush to the side of the **Blade**. Be careful to only fold on the dotted lines. When you’re done, the **Strips** should angle down toward the end of the handle.



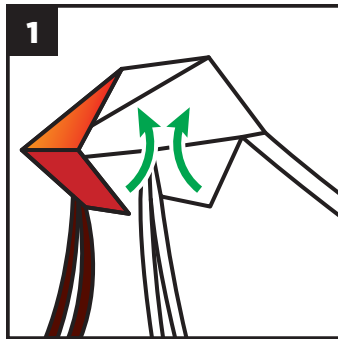
5: Hold the **Guard** blank-side up and position it onto the **Blade** where the **Strips** meet, as shown. Make sure the triangular part from the accordion-folded **Strips** extends above the **Guard** (see green arrow).



6: Fold and overlap the shorter sections of the **Guard**, touching the edges to the **Blade** and **Strips** as shown.



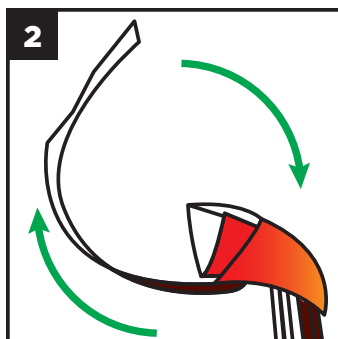
7: Fold and overlap the longer parts of the **Guard** in the same way, overlapping the spike shapes. Tuck the last spike underneath to lock them together. The **Guard** should now have a hexagonal shape and hold the **Strips** in place.



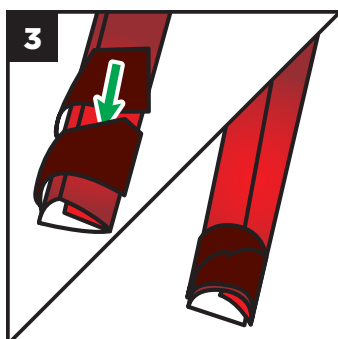
D: Fold all dotted lines (shown in blue) as accurately as possible. A good tip is to pinch along the folds before fully creasing.

E: Note the names of parts called out in gray. They will be used later in these instructions.

1: Look at the flat end of the **Handle** and fold the outer edges into the center, then fold again to form a triangle.



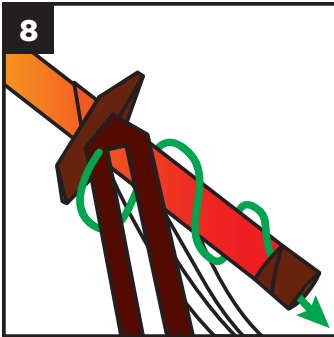
2: Wrap the **Base Wrap** around the handle at least two full rotations. It will overlap itself.



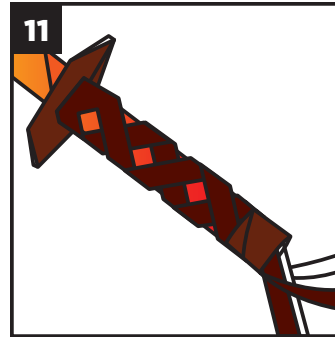
3: Tightly tuck the end of the **Base Wrap** underneath itself where the notches align. This should hold the end closed tightly.

KAMIGAWA: NEON DYNASTY PAPERCRAFT

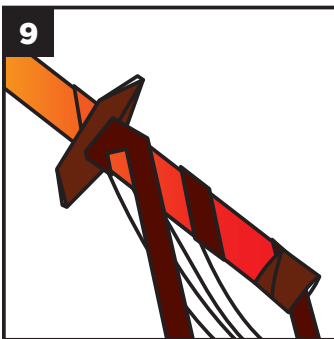
KATANA INSTRUCTIONS



8: Pick one of the thin **Strips** closest to the **Guard** and wrap it in a spiral around the handle exactly two full rotations, and then tuck it under and through the **Base Wrap** (following the path of the green arrow). Pull it as tight and flush as you can, making sure it travels down the handle at a 45-degree angle. Take your time and be careful not to tear the paper.

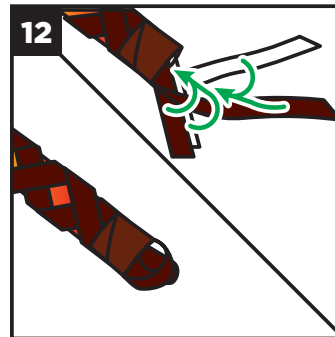
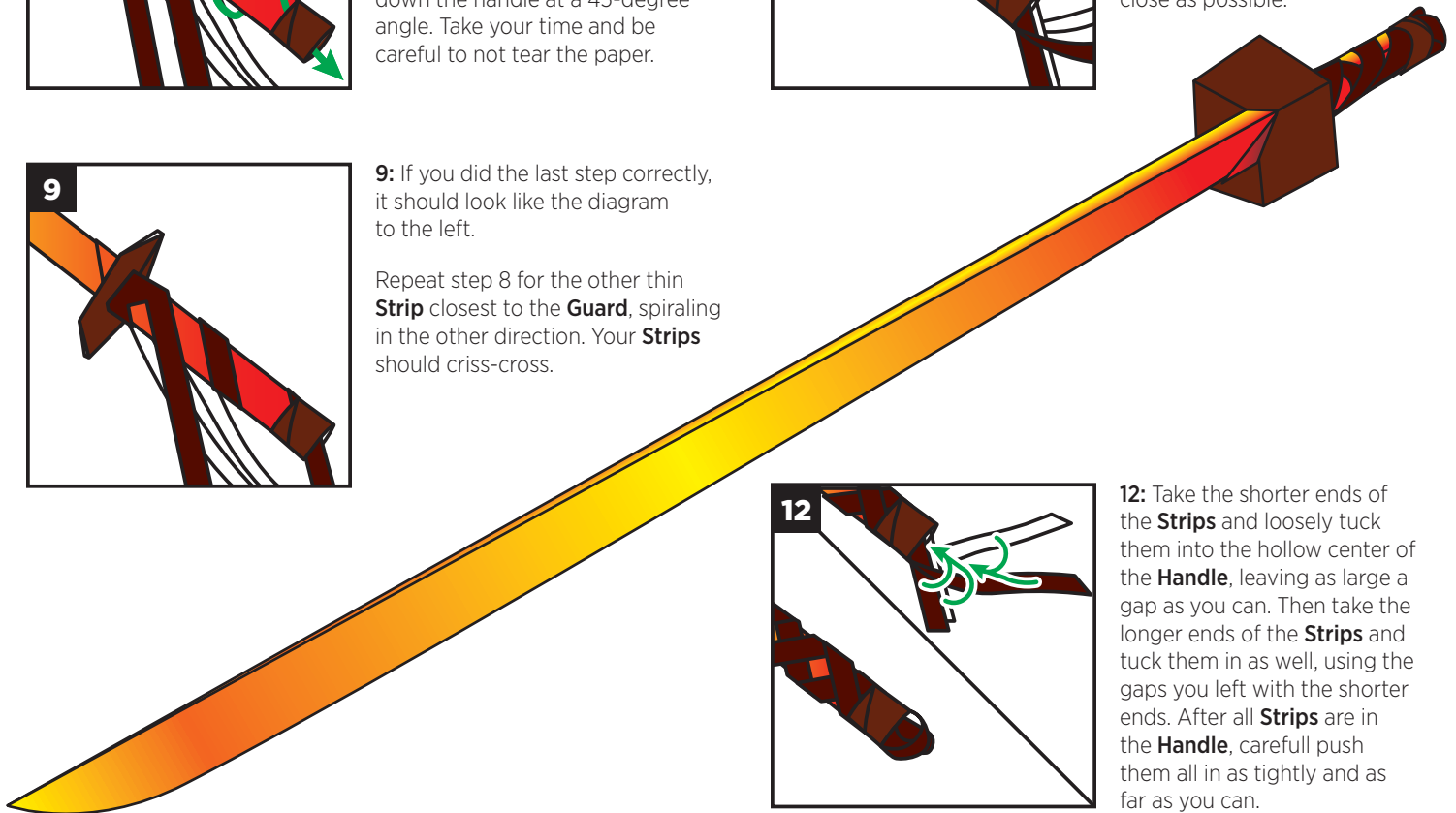


11: Your katana should now look like the diagram, with the ends of the **Strips** sticking out the end of the **Base Wrap** around the **Handle**. This is a good opportunity to delicately pull on the ends to tighten the **Strips** to the **Handle** as close as possible.

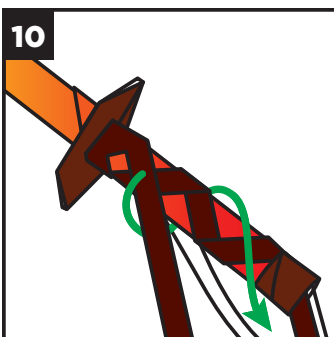


9: If you did the last step correctly, it should look like the diagram to the left.

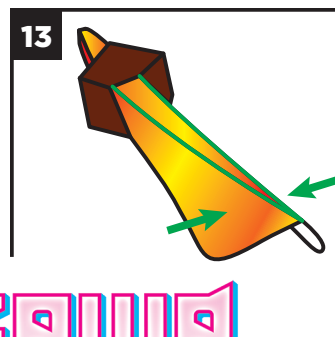
Repeat step 8 for the other thin **Strip** closest to the **Guard**, spiraling in the other direction. Your **Strips** should criss-cross.



12: Take the shorter ends of the **Strips** and loosely tuck them into the hollow center of the **Handle**, leaving as large a gap as you can. Then take the longer ends of the **Strips** and tuck them in as well, using the gaps you left with the shorter ends. After all **Strips** are in the **Handle**, carefully push them all in as tightly and as far as you can.



10: Repeat steps 8 and 9 for the lower **Strips**, one at a time. They will wrap slightly more than one full rotation and go through the **Base Wrap** at the end of the **Handle**.



13: Finally, push the two halves of the **Blade** together so they are touching. Squeeze the fold lines on the blade (shown in green) tightly.

You now have a finished papercraft NEO Kamigawa Katana!

KAMIGAWA
NEON DYNASTY



KAMIGAWA

輝ける世界 NEON DYNASTY

KAMIGAWA: NEON DYNASTY
PAPERCRAFT

KATANA

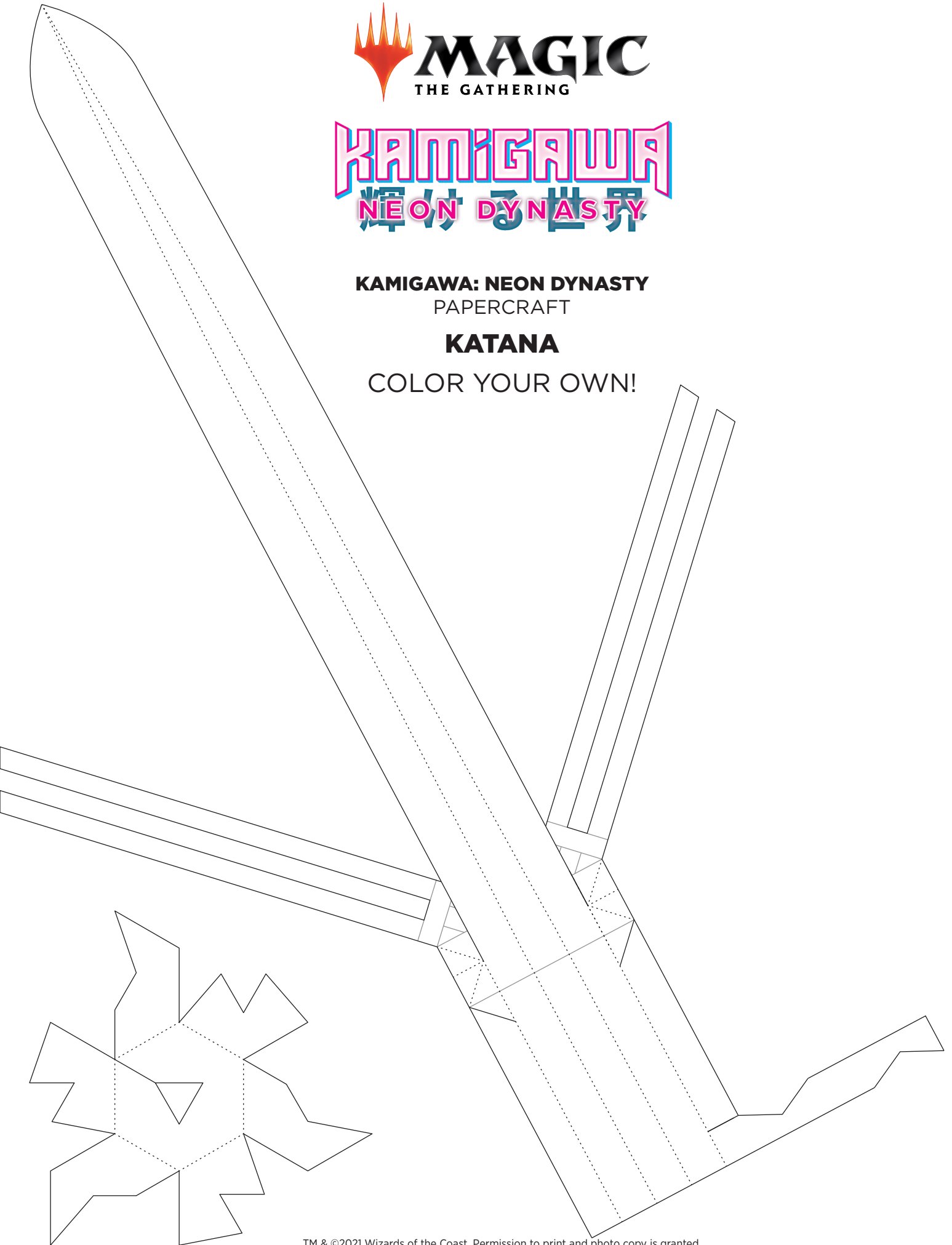




KAMIGAWA: NEON DYNASTY
PAPERCRAFT

KATANA

COLOR YOUR OWN!

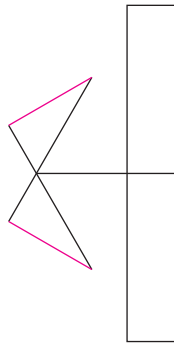




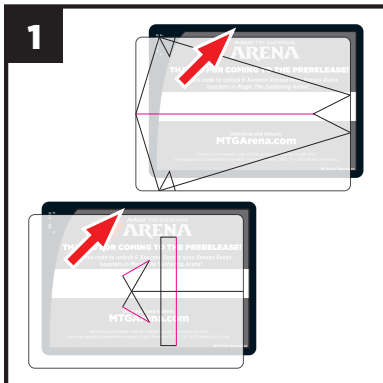
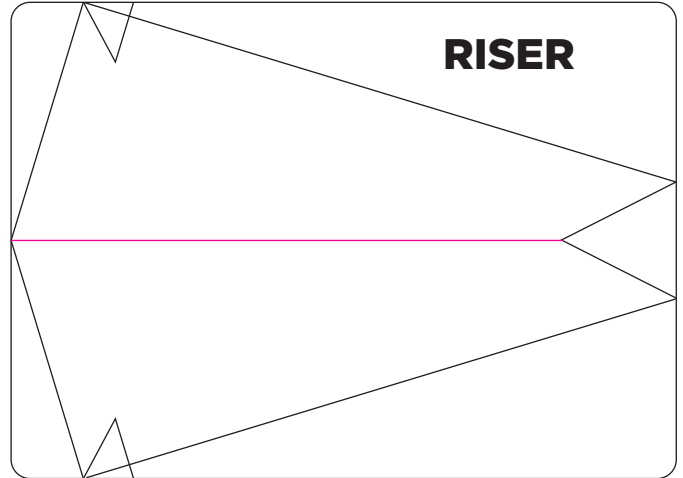
KAMIGAWA: NEON DYNASTY PAPERCRAFT

DISPLAY STAND INSTRUCTIONS

BASE



RISER

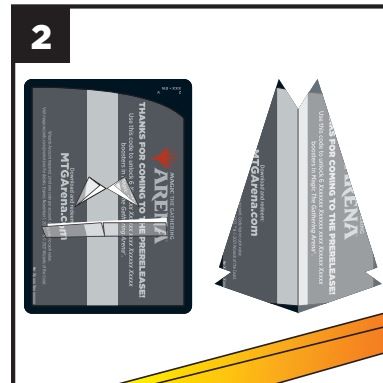


1: Cut out the two card-shaped rounded rectangles above.

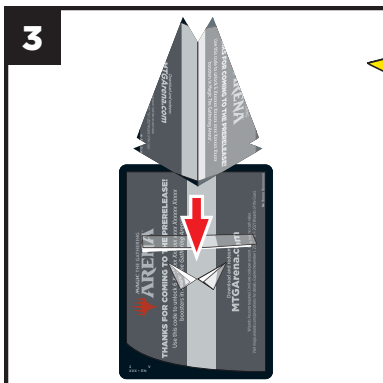
Select two cards you own that no longer have value to upcycle, such as used Arena Code Cards.

Align the rounded rectangles you cut out edge-to-edge with the cards and hold firmly. You can use tape to help hold securely.

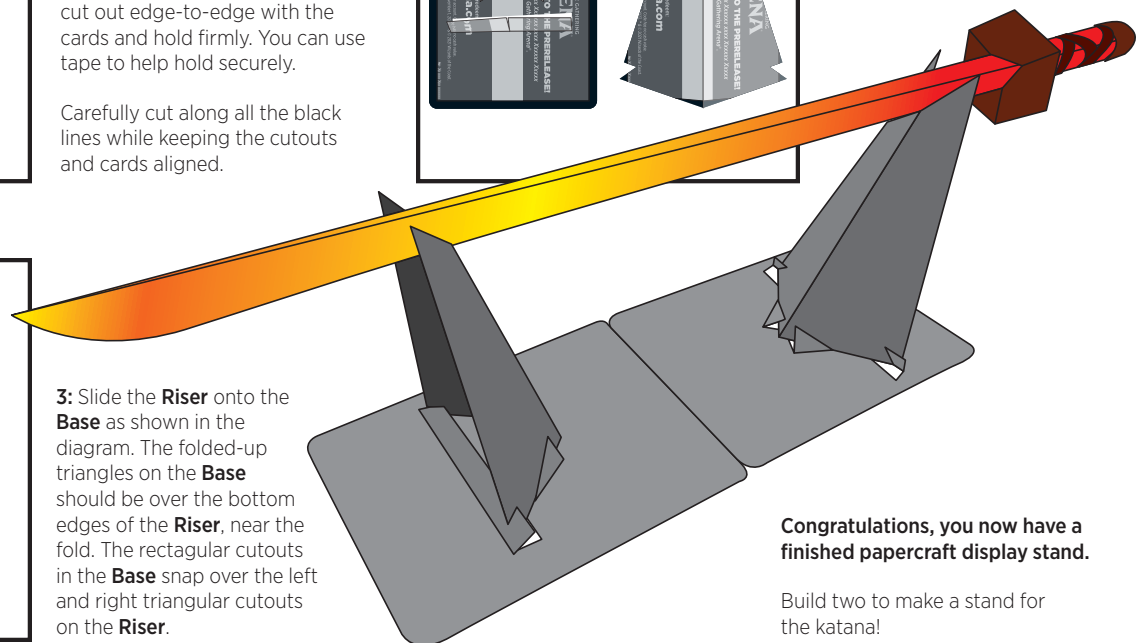
Carefully cut along all the black lines while keeping the cutouts and cards aligned.



2: Fold the cards where indicated by the pink lines. You should now have two pieces that look like the diagram to the left. Note the names of the parts **Base** and **Riser** for the next steps.



3: Slide the **Riser** onto the **Base** as shown in the diagram. The folded-up triangles on the **Base** should be over the bottom edges of the **Riser**, near the fold. The rectangular cutouts in the **Base** snap over the left and right triangular cutouts on the **Riser**.



Congratulations, you now have a finished papercraft display stand.

Build two to make a stand for the katana!

KAMIGAWA
輝ける世界
NEON DYNASTY